

# Install Cura Slicer IMADE3D Edition - PC

*Cura IMADE3D Edition is a customized version of the open source slicer 'Ultimaker Cura' with the latest and greatest JellyBOX and JellyBOX 2 profiles.*

## System Requirements

### **Cura does not support 32 bit systems**

While this will cease being an issue in the future (both Microsoft and Apple have already officially dropped support for 32 bit architecture a while ago), there are of course many users with older 32 bit computers.

We are aware of this problem, and are working on other ways to support 32 bit users. In the meantime, you simply need to use a compatible computer, or use a different slicer. (Older versions of Cura or Slic3r are two common options.)

### **Operating systems**

Windows Vista or higher, 64 bit.

Mac OSX 10.11 or higher, 64 bit.

Ubuntu 14.04 or higher, 64 bit.

### **Minimum System requirements**

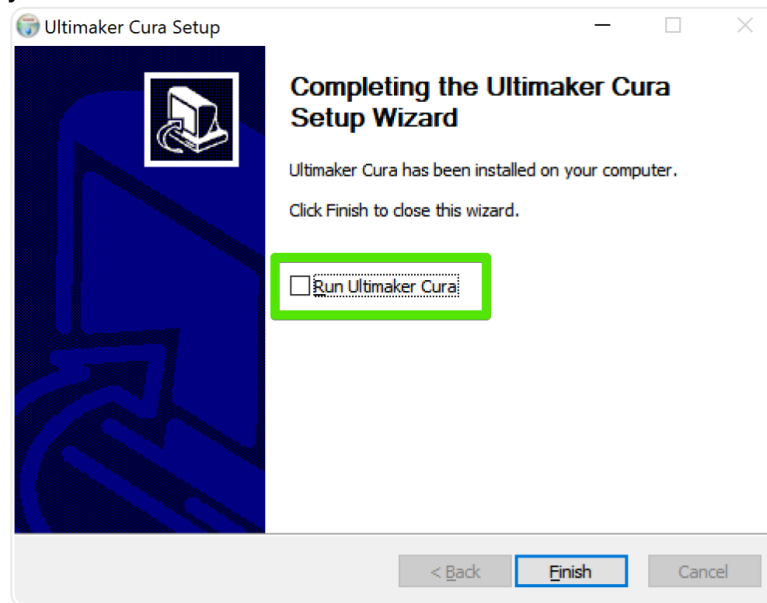
OpenGL 2 compatible graphics chip, OpenGL 4.1 for 3D Layer view.

Intel Core 2 or AMD Athlon 64 or newer

205 MB available hard disk space

# Install

1. Head over to <http://go.imade3d.com/cura>
2. Download the latest available Cura IMADE3D Edition
3. Doubleclick to unzip the archive. There are TWO files in total.
4. Run the **first file**. This installs a regular open-source Ultimaker Cura in it's full state.
5. It's recommended that you **do not run Cura**, but if Cura does start, just make sure to **CLOSE** it before you continue.



6. Run the **second file**. This will create a separate 'Cura IMADE3D Edition' program that you can run alongside regular Cura.

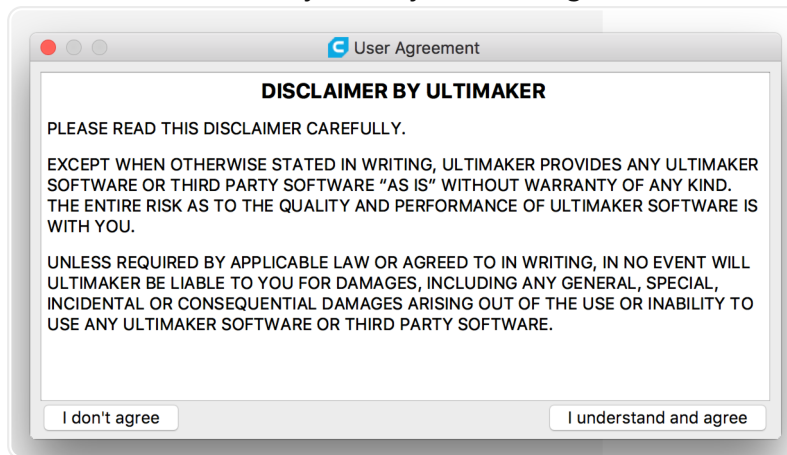
## Initial Setup

*Cura on your computer may look a bit different depending on your system and Cura version.*

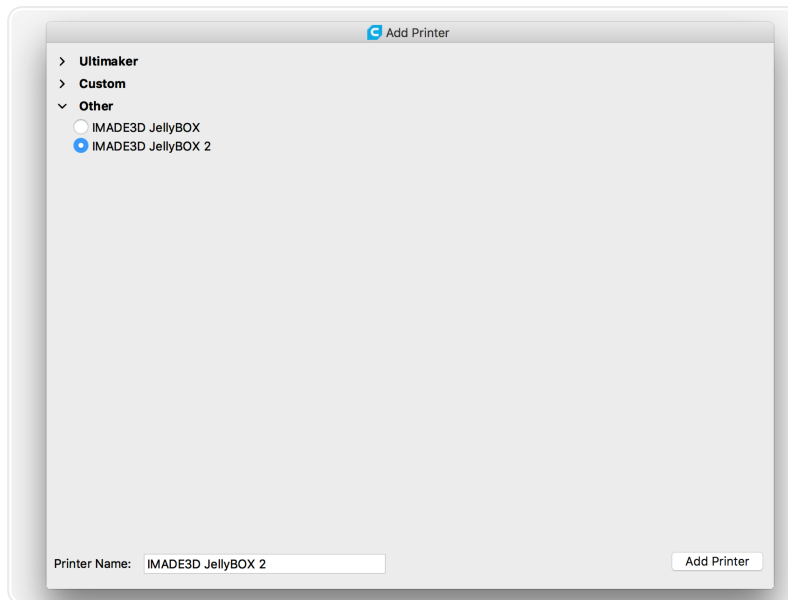
First, start **Cura IMADE3D Edition**



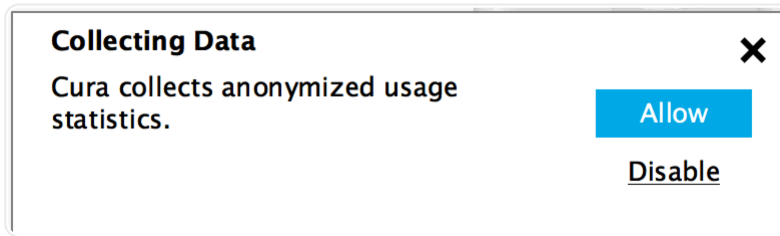
When you open Cura for the first time, you may have to agree to the User Agreement.



The **Add a new printer** wizard will start automatically if this is your first time. Select either JellyBOX or JellyBOX 2 from Others  
(Later, you can add additional machines by going to Settings > Printer



You also have the option to allow or disable Collection of *anonymous* usage data that is used to help develop future Cura versions. We recommend *allow*.



## What's Next?!

To learn more about using Cura with JellyBOX, continue now with the Cura Quick Start Guide :-)

## Troubleshooting: Return to factory settings = Delete Cura Configurations Folder

Resetting Cura may be useful for demonstration purposes, or as a last resort in fixing configuration or start up issues (sometimes caused by previous installations.)

**Warning: This process removes all machines, profiles and preferences! It will be like you never used Cura. Backup your files to another location if you have anything to loose.**

1. Open Cura.
2. Go to Help > Show configuration folder.
3. Close Cura.
4. Delete all files in the folder.
5. Start Cura.

In short, you need to delete

My Computer/users/[user\_name]/AppData/Local/cura/[cura version]

Note: By default, the AppData folder is hidden. You will need to elect to 'show hidden folders' first. Follow [these instructions](#) if you need help with that.