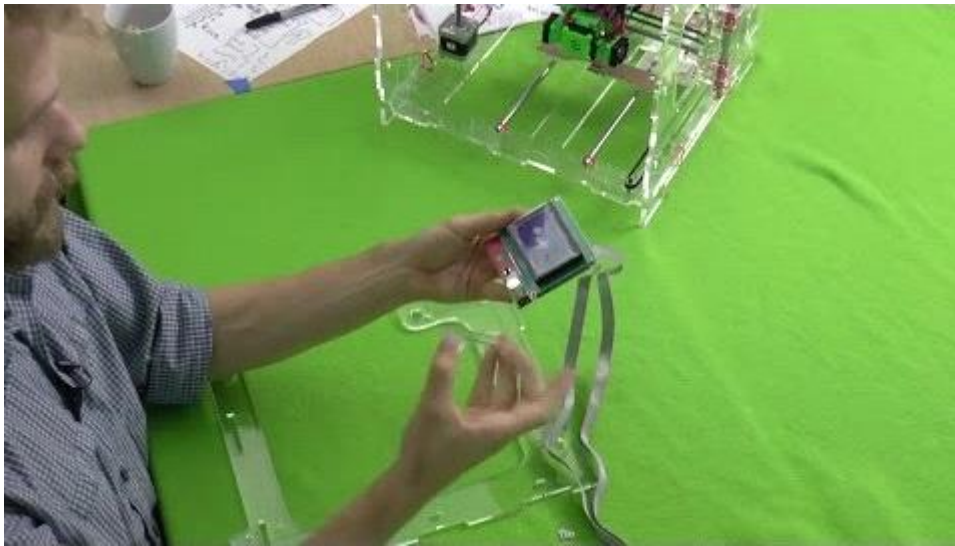


#join Front

[JellyBox Build: 21 LCD Front](#)



In this video, we add the front piece to the rest of the JellyBox.

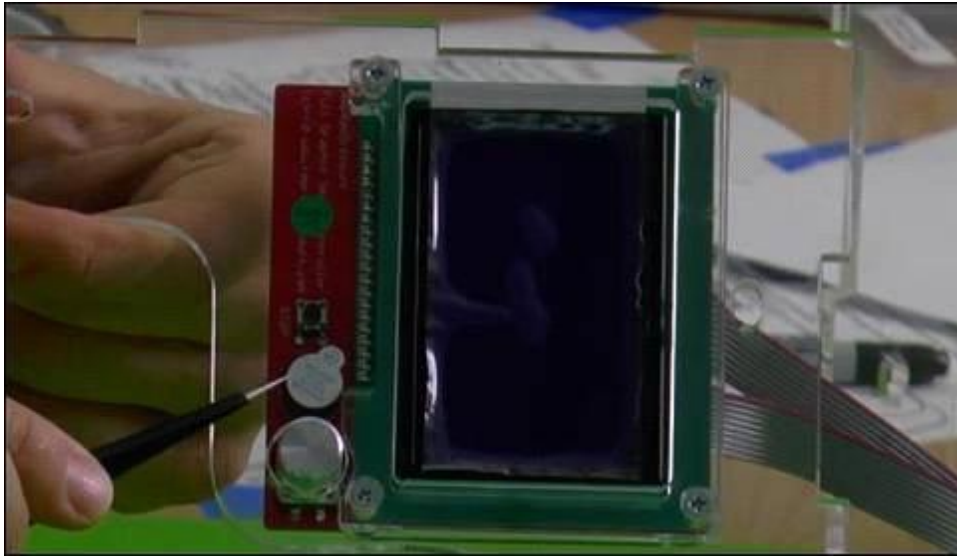


Title: You Will Need:



- LCD display
- Front acrylic piece (it says IMAD3D JellyBox)
- Two acrylic spacers
- Four M3x25 flathead bolts
- Four M3 washers
- Four M3 locknuts

Title: Peel Off Sticker on Controller (Optional)



Peel off the white sticker if you do not like how it looks.
(In the video, we do this at a later stage, however, it's easier to peel the sticker now.)

Title: 3mm LCD Spacer



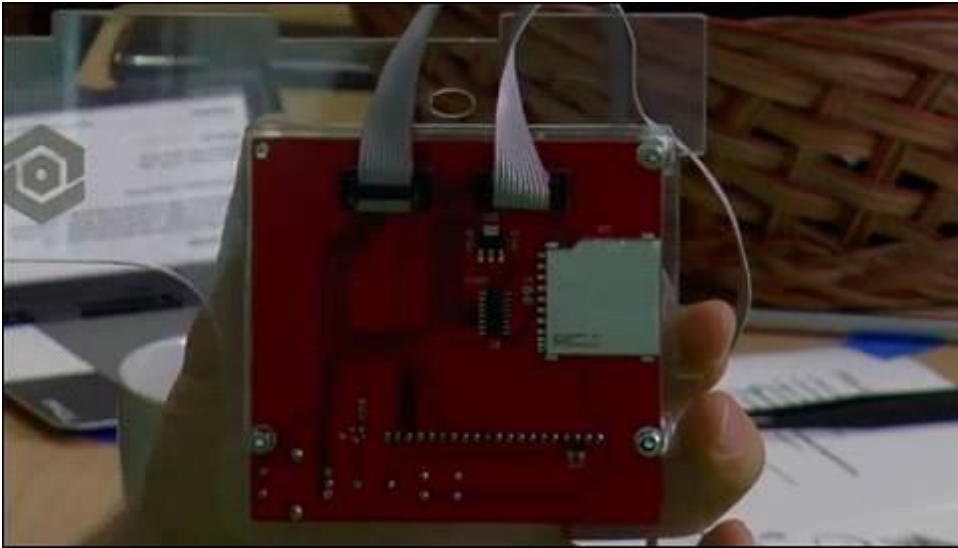
Sandwich the thin 3mm LCD spacer between the two layers of the controller.
The one hole not covered by the spacer will be on bottom left.

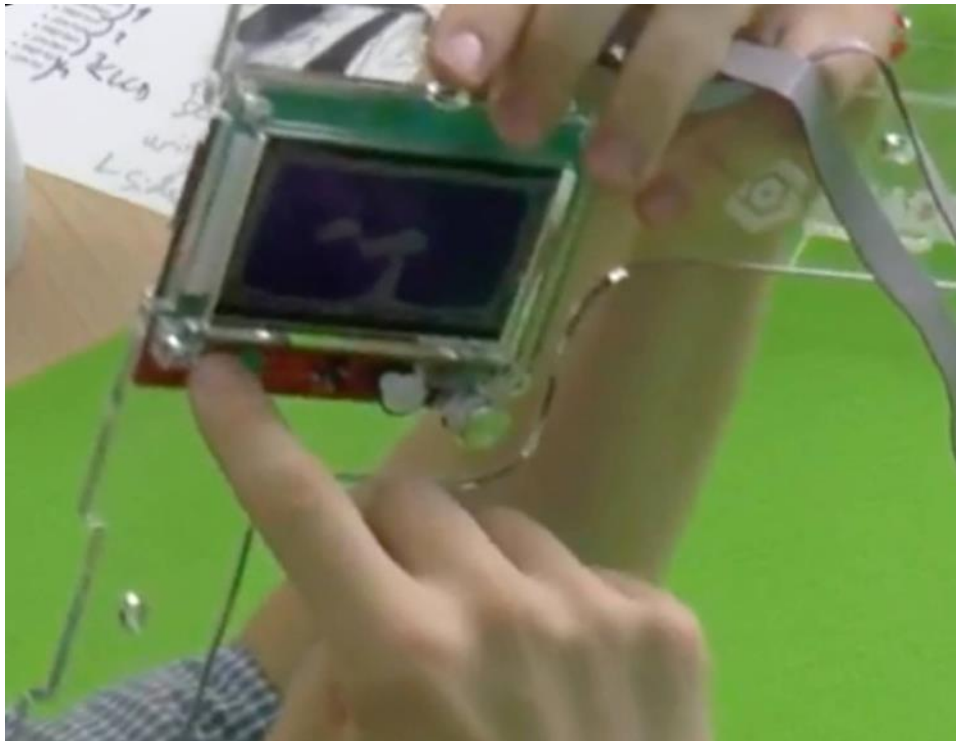
Title: 6mm LCD Spacer



Align the 6mm spacer to the front of the controller.

Title: Conjoin the Controller with the Front Side





Attach the LCD controller to the front acrylic piece.

Tighten screws in place with screwdriver or hex key.

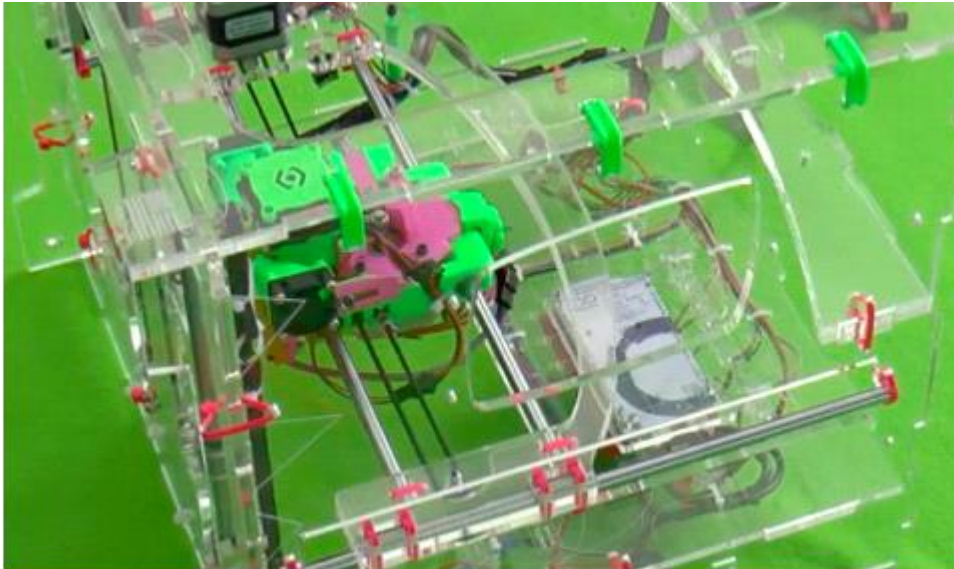
! The 3mm spacer does not cover the lower left hole. Do not over-tighten this screw or you could damage your controller!

Title: Ensure the Knob is Working Correctly



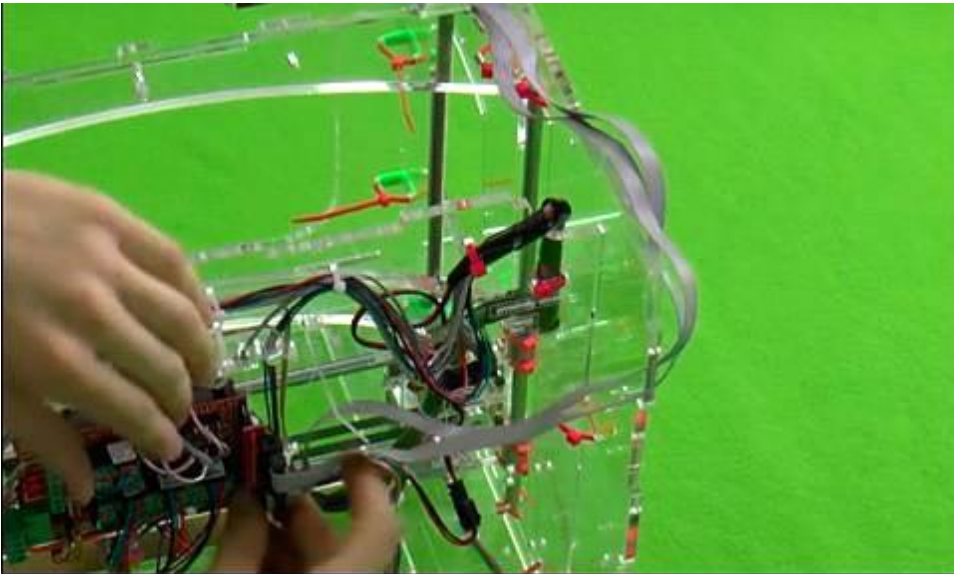
If you have troubles fully pressing the knob (there is an audible click), or if the knob does not rotate smoothly, pull it out a bit with pliers and all will be well.

Title: Attach the Front Piece to the JellyBox



Fasten the front piece to the rest of the JellyBox using the green clips and 6" zip ties.

Title: Secure the LCD Wires



Route the LCD wires along the side of the JellyBox and connect them into the RAMPS.

Use the last remaining zip tie on inner back piece to secure the wires.