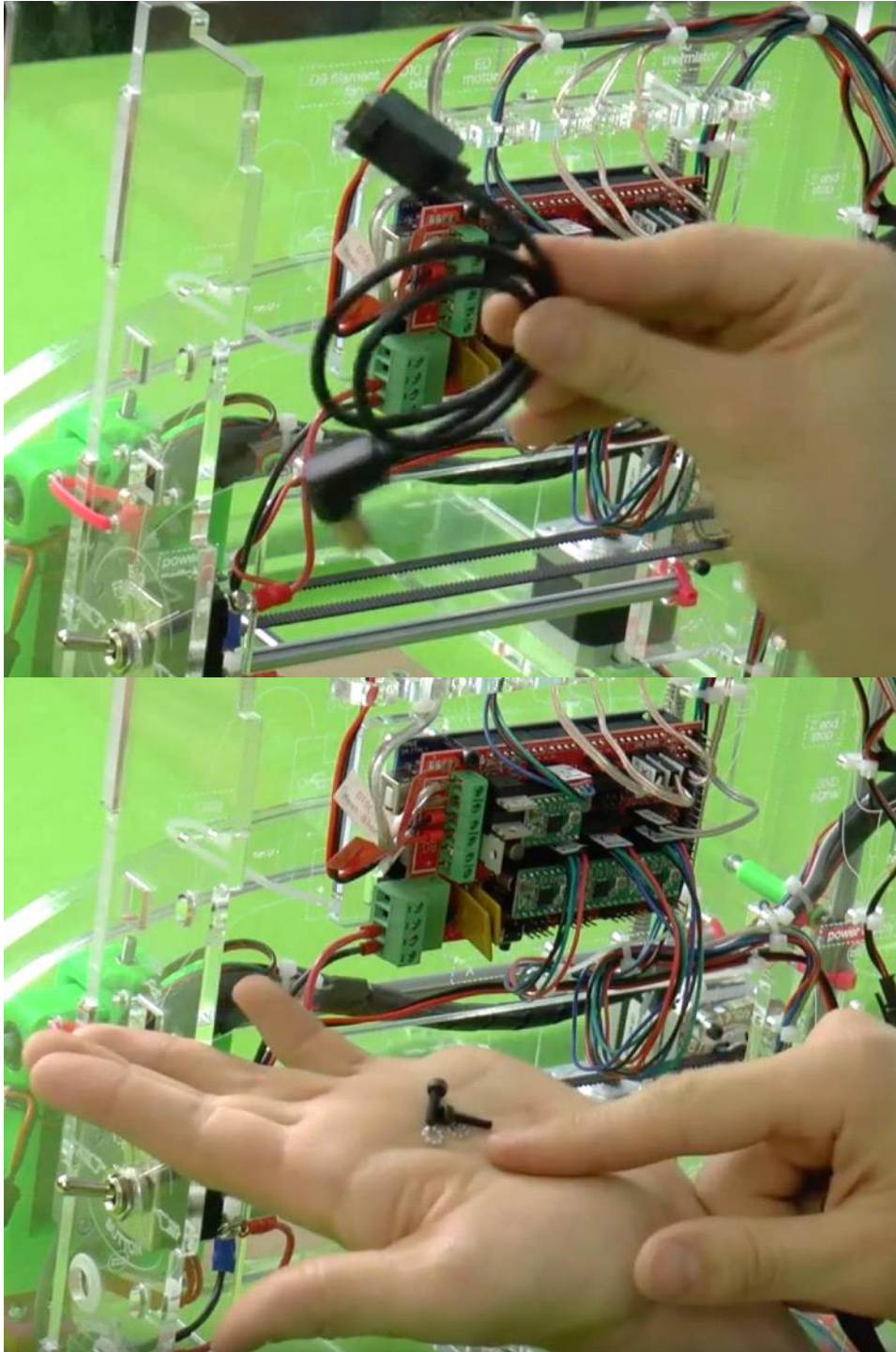


# #electro Wiring 05: USB Extension

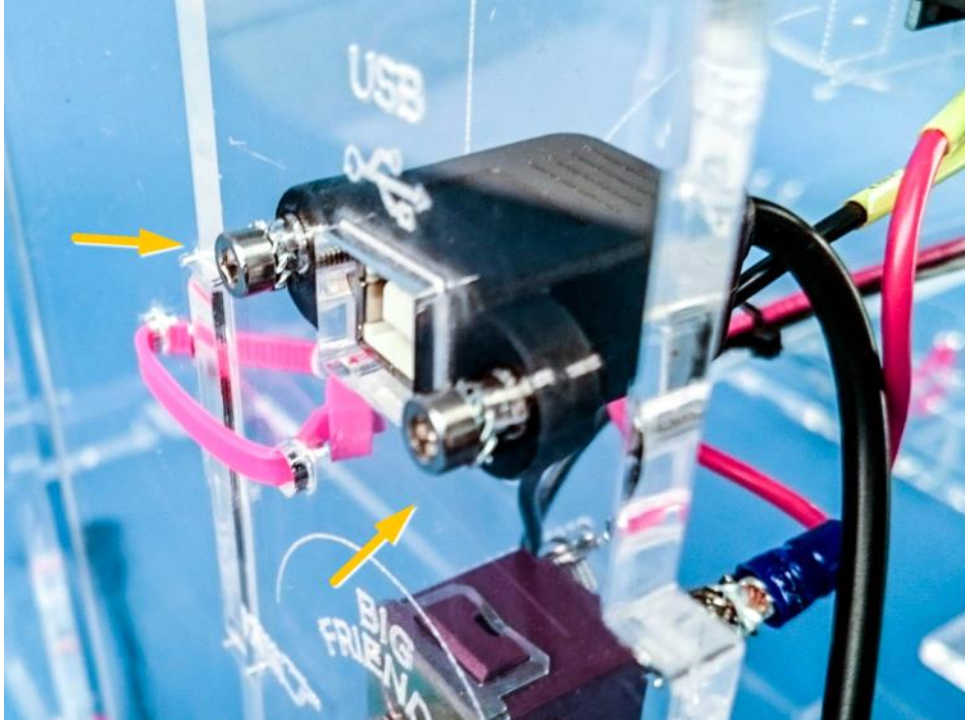
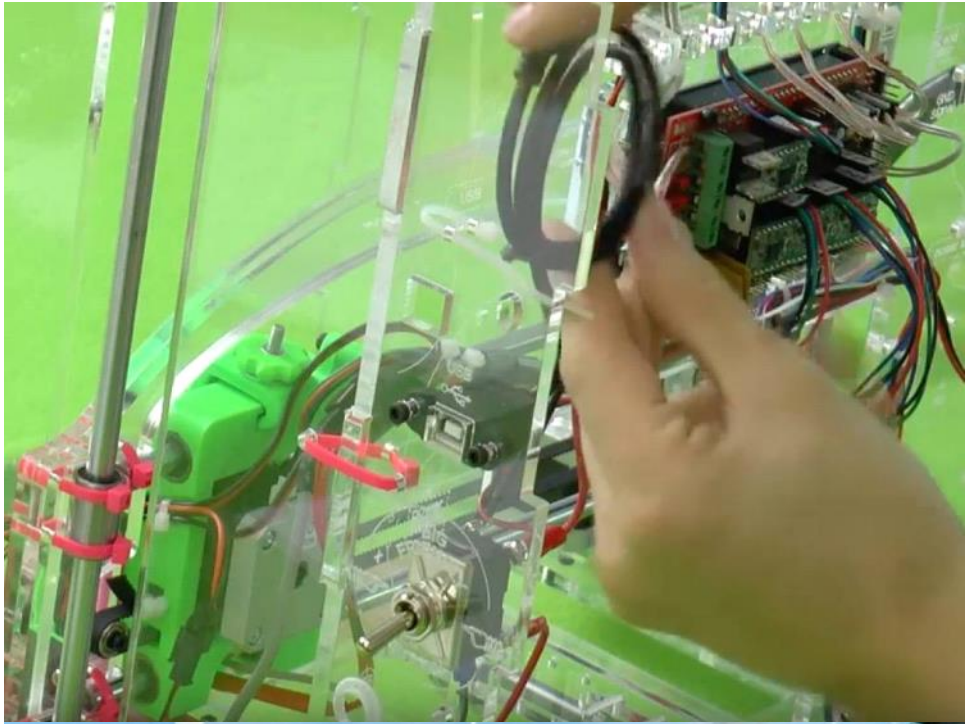
Friday, November 25, 2016 9:32 PM

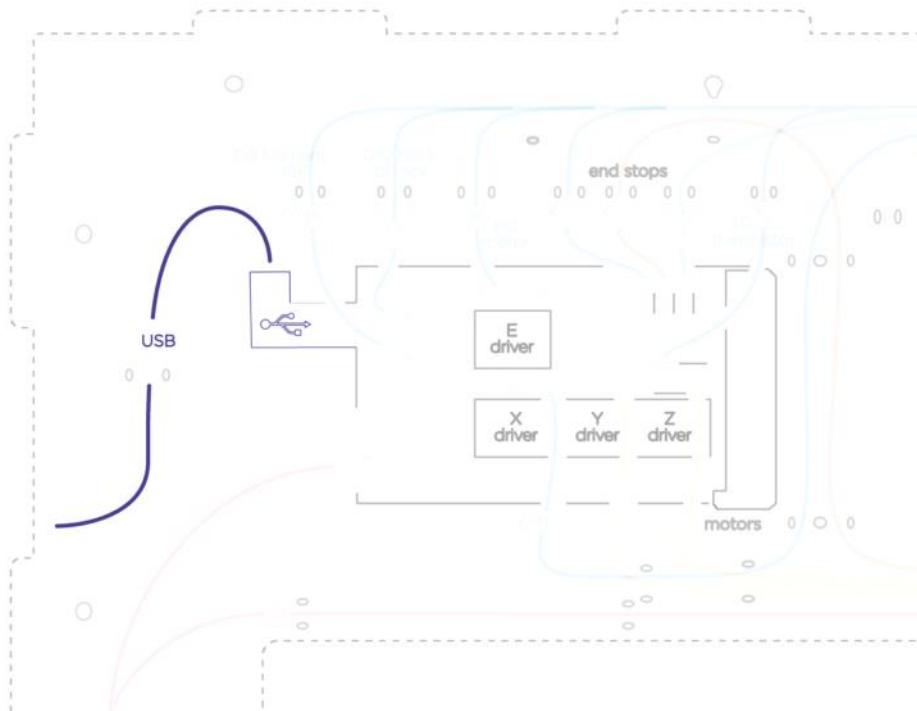
You'll Need:



- USB Cable
- M3x12 bolts (2)
- M3 serrated washers (2)

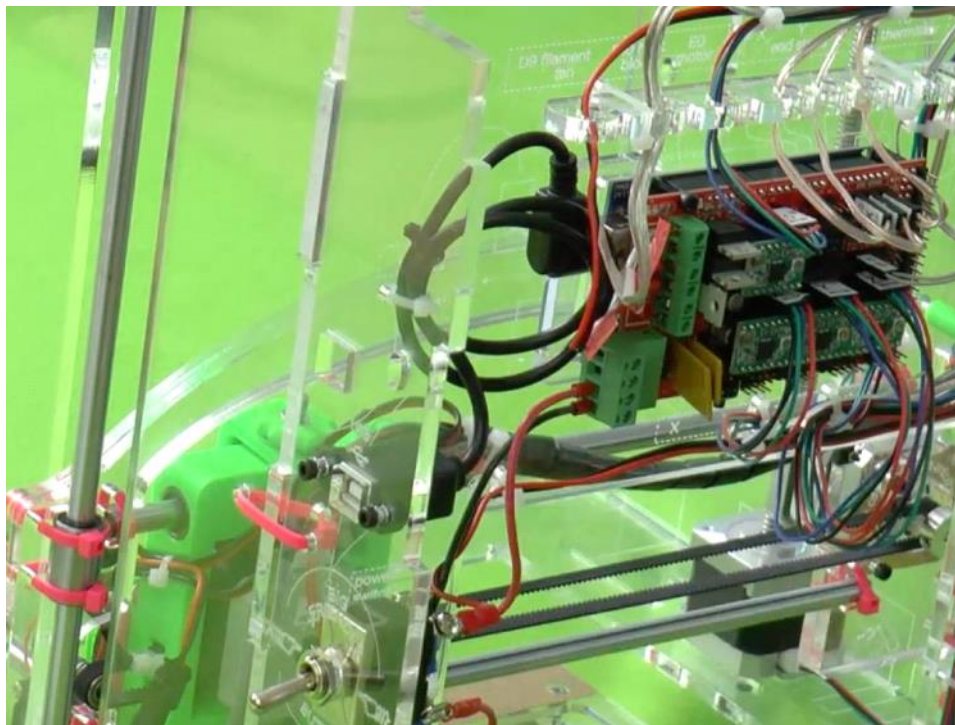
Title: Bolt On the USB Connector





Put the washers on the bolts.  
 Use the bolts to attach the USB connector to the box.  
 Don't over tighten the bolts.  
 Use the short end of the hex key for leverage.

### Title: Connect the USB Cable



The USB port in the RAMPS board is at the top left.  
 Push the cable behind the wires.  
 Yes, the cable USB is too long. Sorry. Make a tidy loop and attach it to the inner back. Voila!