

BOX Quadruple

[JellyBox Build: 10 Quadruple](#)

(link directly to BOX overview t=2:56)

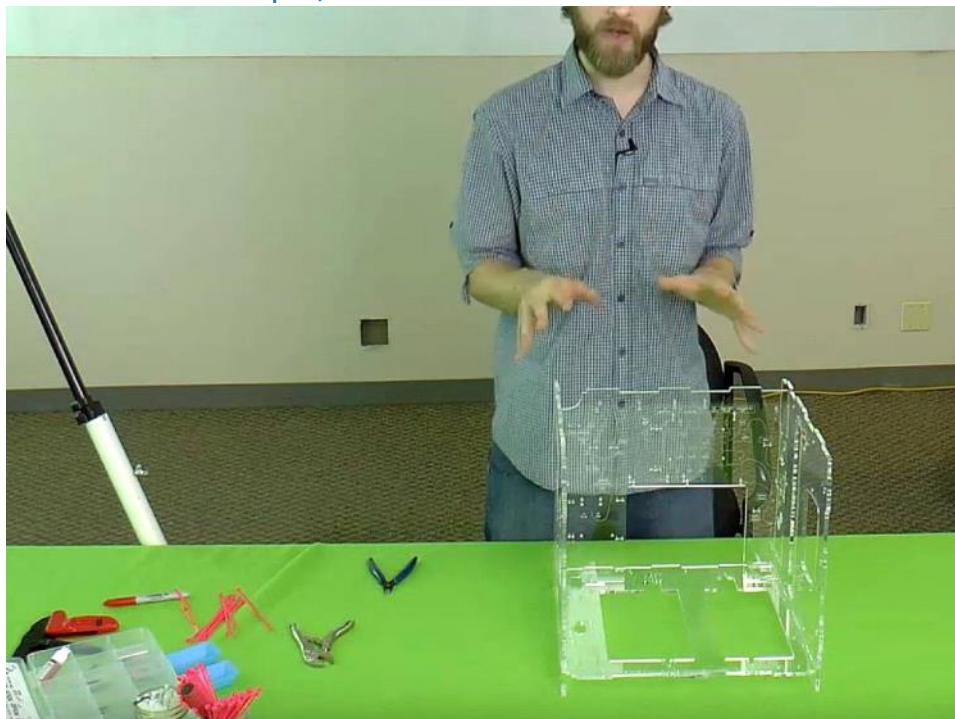


In this video, we put together the basis of the JellyBOX frame, or, "box."

We call it quadruple because there's four acrylic pieces:

- Bottom
- Inner Back
- Left
- Right

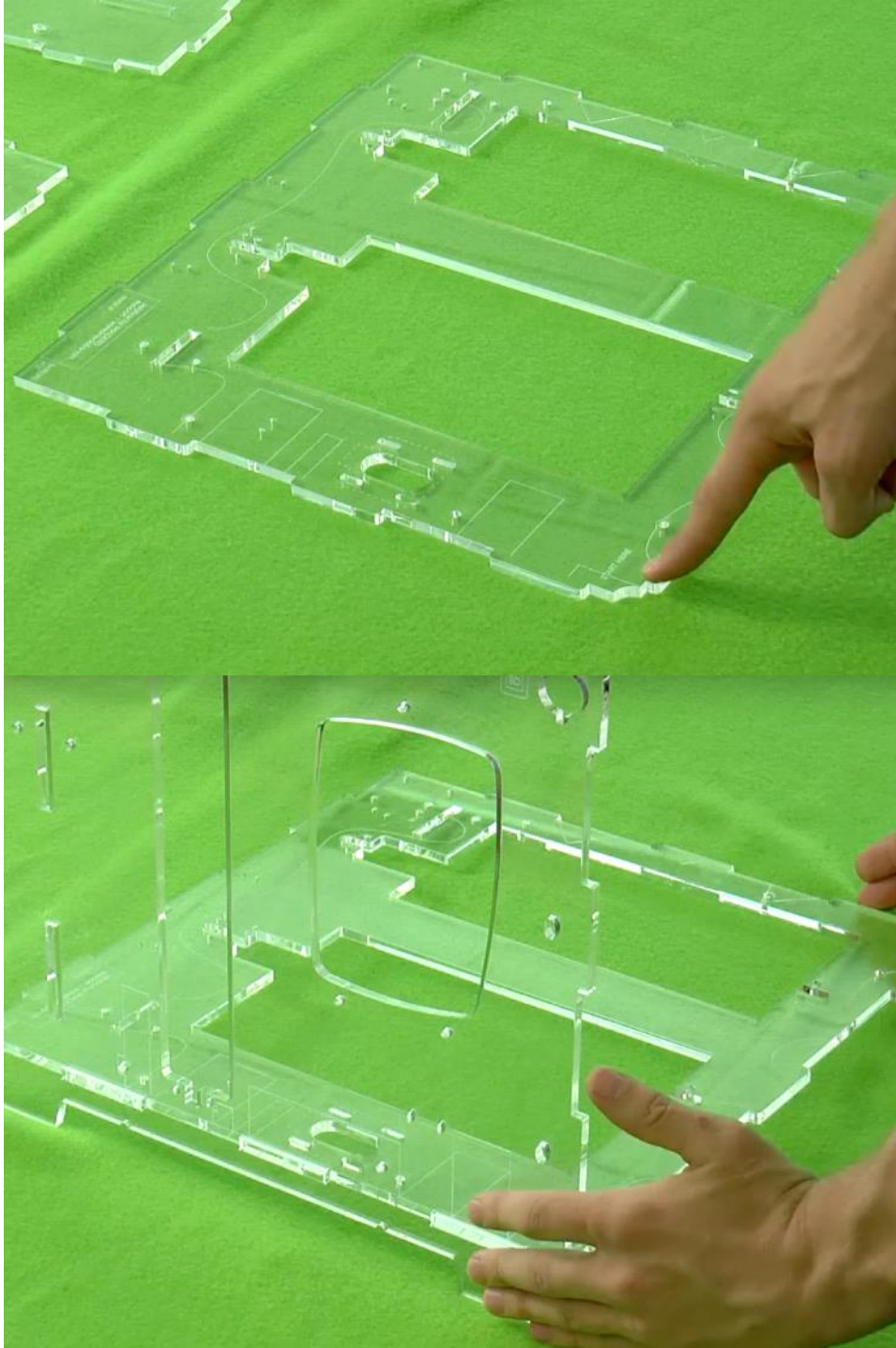
Title: Box Quadruple; You'll Need:



Bottom acrylic piece

Inner Back acrylic piece
Left acrylic piece
Right acrylic piece
6" zip ties (8)
Vise grip (optional)
Side Cutters (= snips)

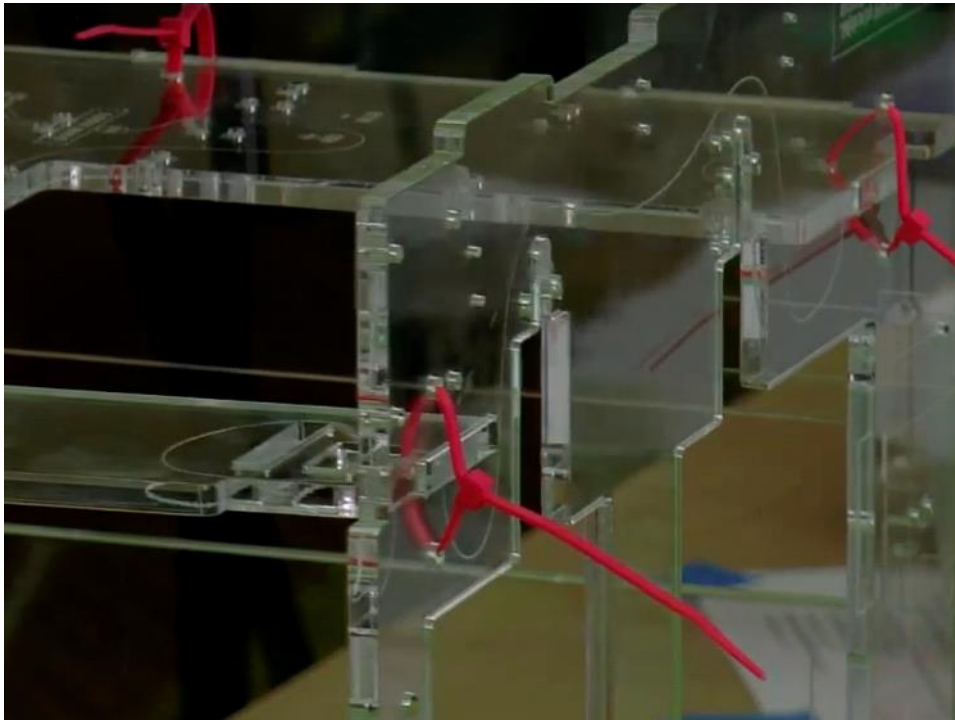
Title: Assembling the First Three Sides





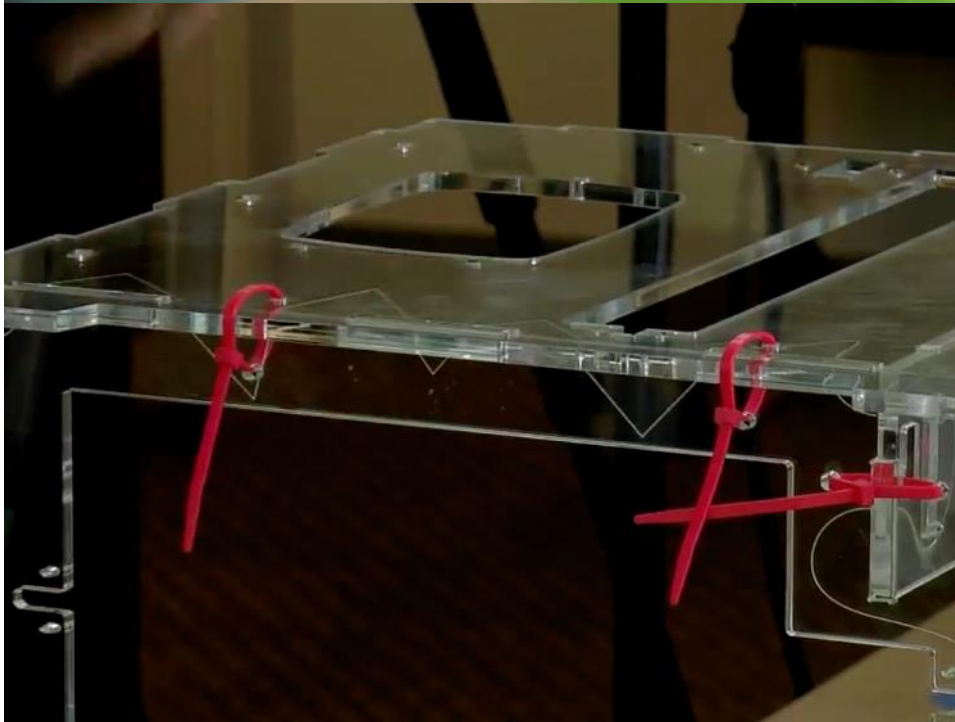
Find "Start Here" etched on the bottom panel.
The etched lines along the edges of the bottom piece match to the acrylic piece that aligns with that side (e.g., triangles, half-domes, rectangles).
Slot the left side (rectangle etching) onto the bottom panel.
Rotate the assembly towards you so it supports itself.
Insert the inner back panel.

Title: Secure the Sides



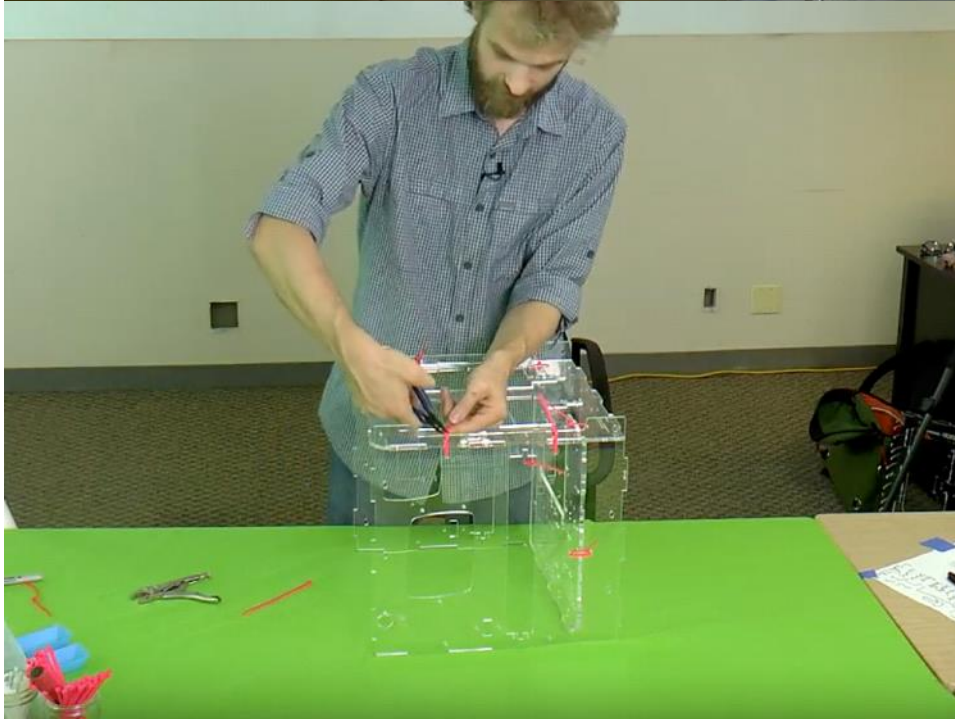
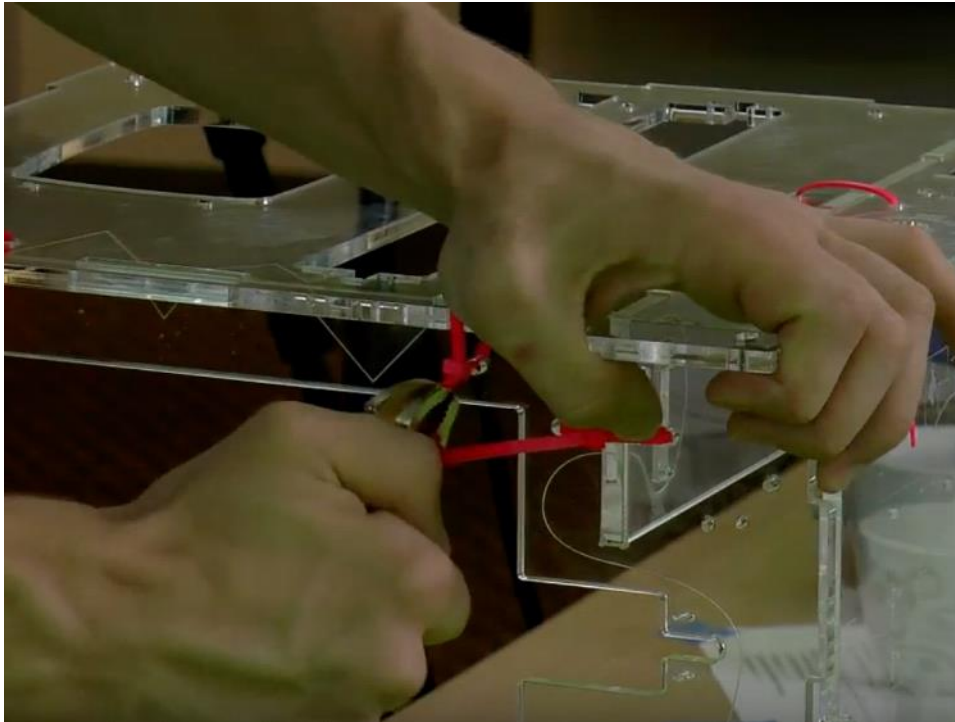
Use 6" zip ties to secure the sides.
Keep the heads inside the box or below the bottom panel.
Pull the 6" zip ties hand-tight.
One 6" zip tie will pass through a rectangular hole on the inner back panel.

Title: Attach the Right Side



Slot the right side (triangle etching) onto the box.
Secure it with hand-tight 6" zip ties.

Title: Finishing Touches



(optional) Use vice grips to tighten the zip ties.
Use side cutters to trim the ends off the zip ties.