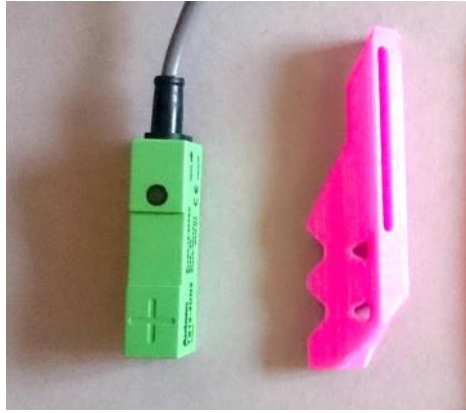


# #prep X Assembly 03-A: Proximity Sensor

*You got Single Fan?*

Good. **Stay here.** This is the right guide.



*You got the Dual Fan Upgrade?*

For that, see corresponding [Dual Fans Guide](#).



In this guide, we attach Left filament fan AND the proximity sensor to the X carriage.

Proximity sensor = Z-end stop



You'll need  
M3x16 bolt

- M3 regular washer
- M3 regular nut
- Two 4" zip ties
- A piece of a double sided tape (or a piece of blue tape)



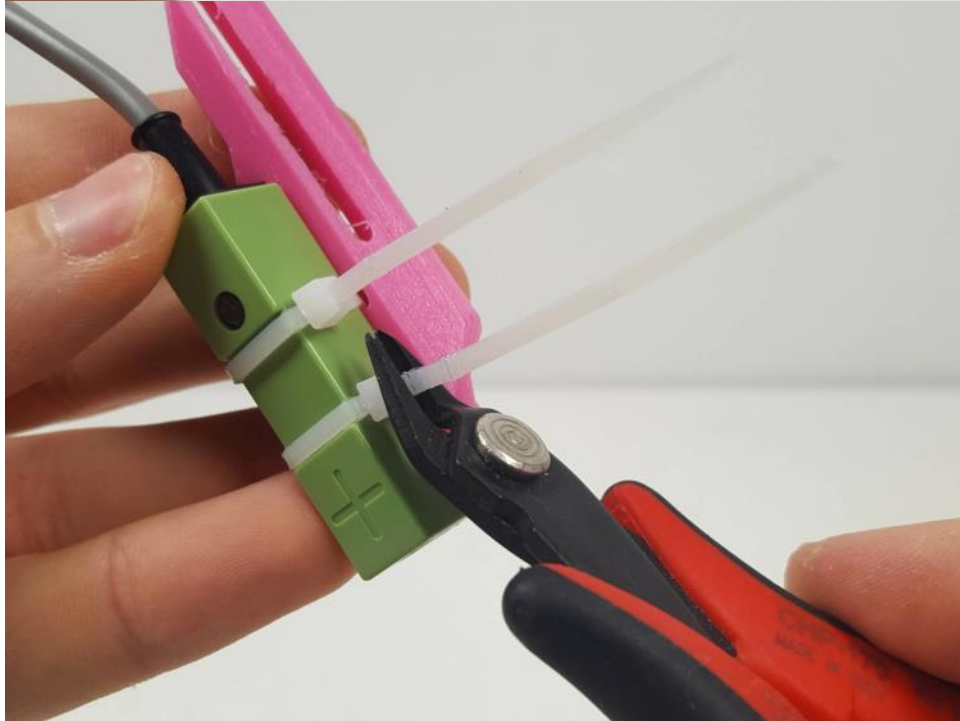
Put a piece of a double sided tape onto the sensor mount.  
If you don't have any double sided tape, you can roll-up a piece of blue tape sticky side out. Works great, too. We simply need to increase the friction on the back of the sensor.



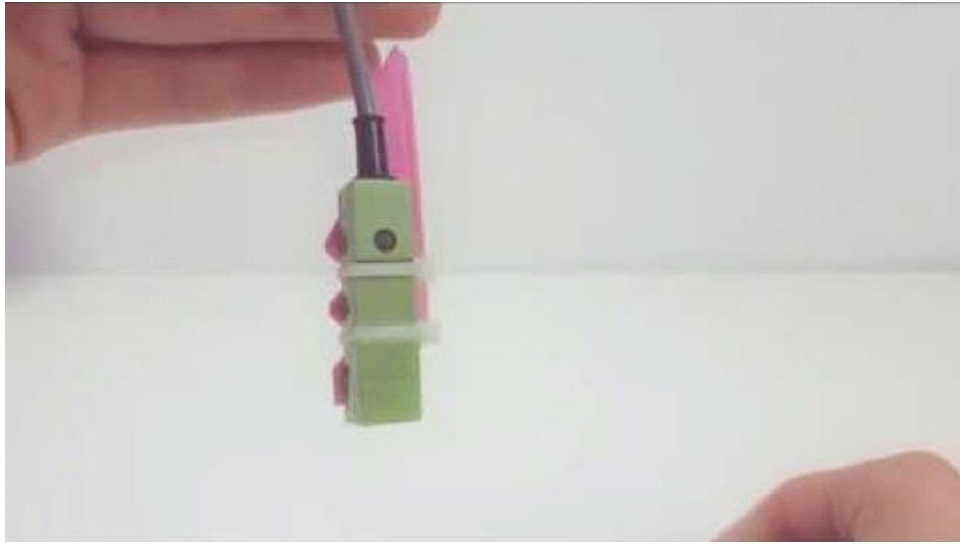
Thread two 4" zip ties through the proximity sensor mount as shown.



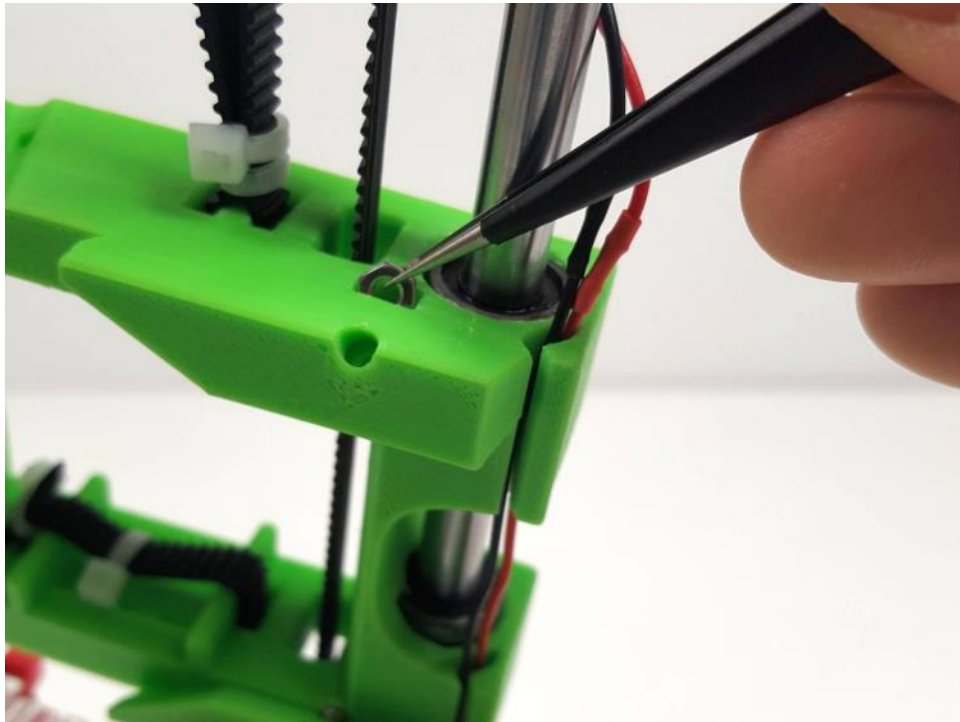
Attach the sensor to the pink mount.  
Both zip ties align with ridges on the sensor.



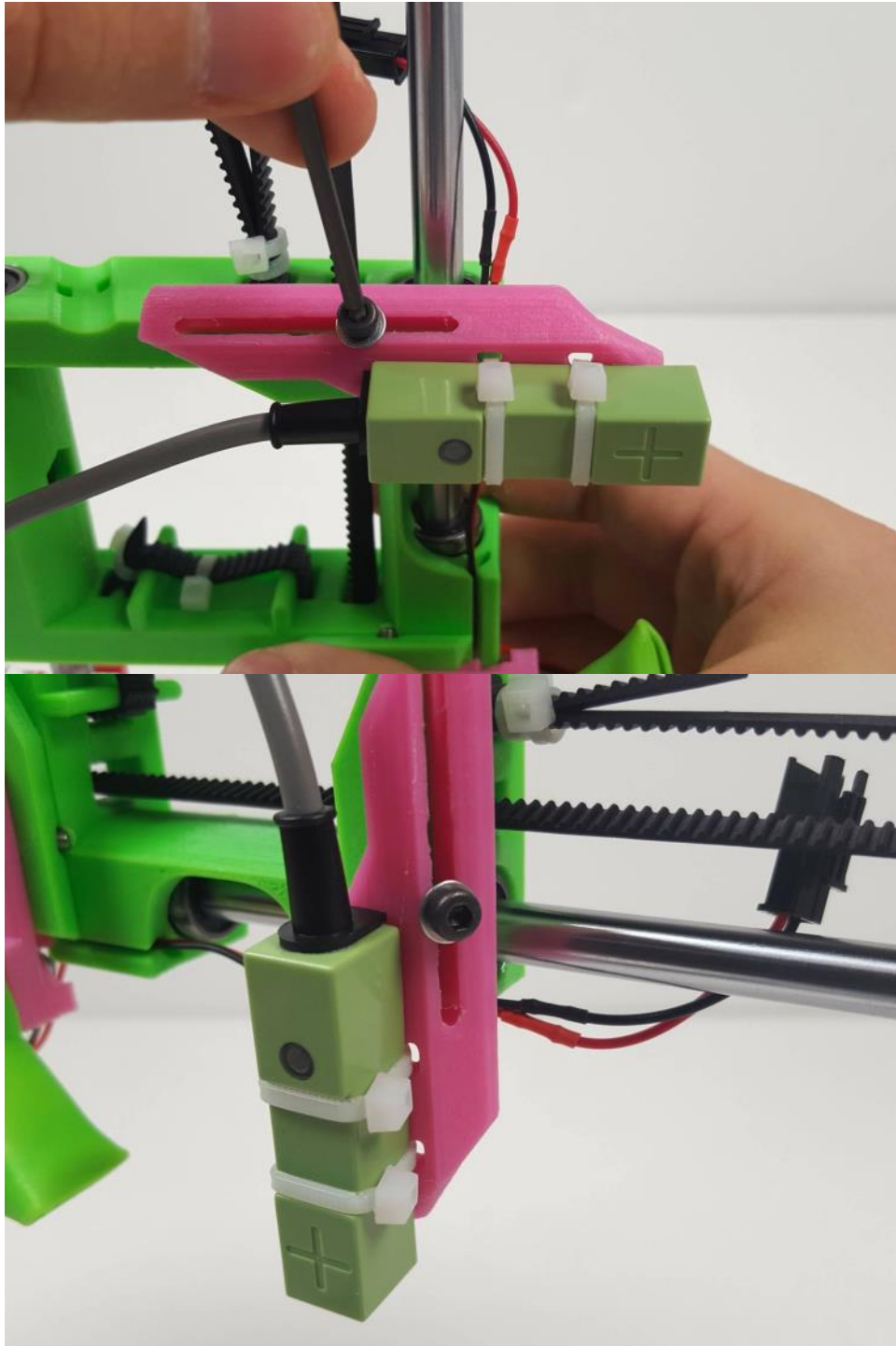
Make these nice and tight! We don't want any random sensor movement.

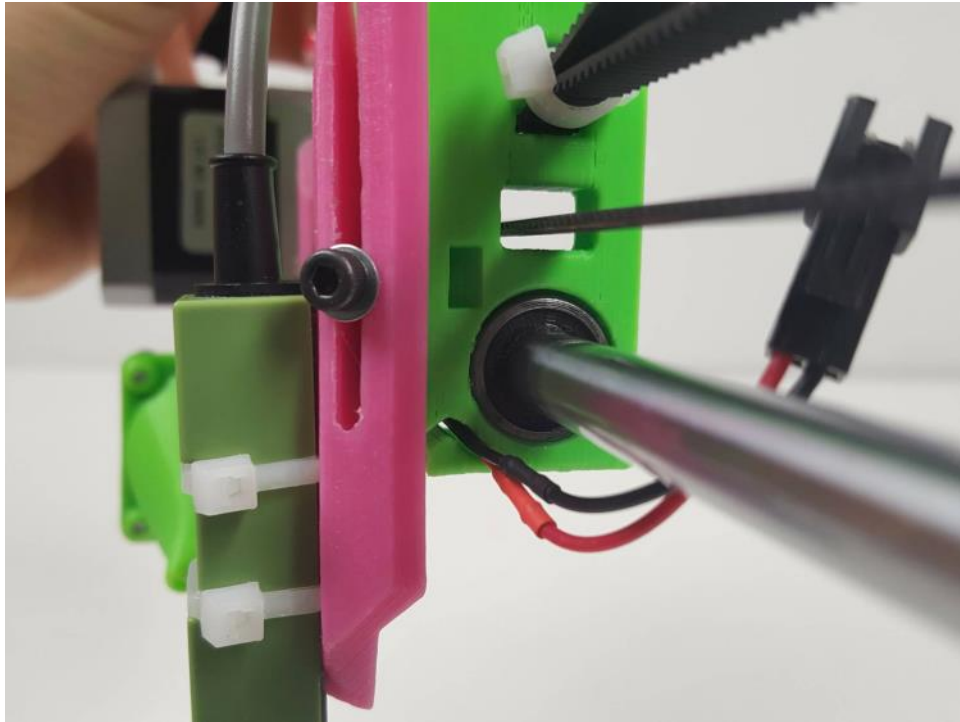


[Tall Green Proximity Sensor](#) (8s video)  
Check: this is what it should like.

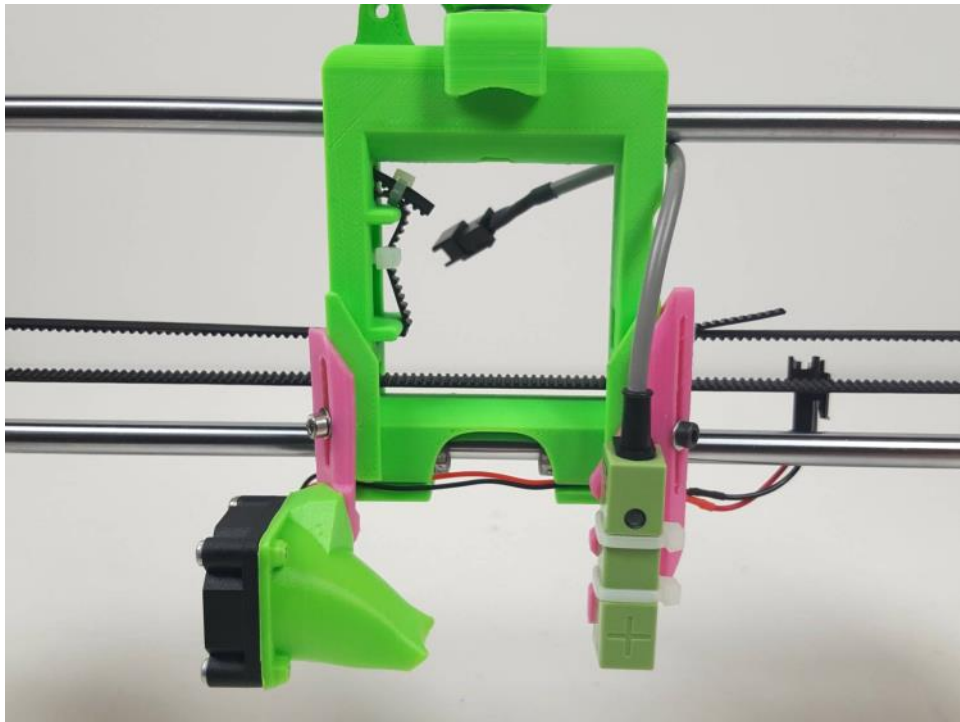


Attach the sensor with the mount to the right side of X carriage – just like we already did with nozzle fan on the left side.  
Drop in the M3 nut into the slot on the right side of the X carriage.  
Pro Tip: turn the x assembly on a side and let the gravity do the work for you. Drop in the nut with tweezers .





Attach the sensor mount with M3x16 bolt and a regular M3 washer.



Done! Both the fan and the sensor are attached to the X-carriage.